

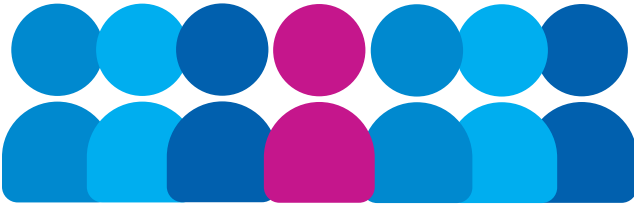


FOR YOUTH DEVELOPMENT®
FOR HEALTHY LIVING
FOR SOCIAL RESPONSIBILITY

COMMUNITY IMPACT

YMCA OF SNOHOMISH COUNTY 2016

ONE in SEVEN



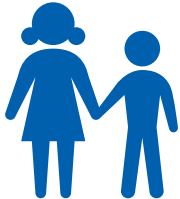
Snohomish County residents has a connection with the YMCA. In 2016 the Y served 101,409 community members through its six branch locations, 54 program sites, and Big Brothers Big Sisters affiliation.

YOUTH DEVELOPMENT

Nurturing the potential of every child and teen.

The Y is the largest child care provider in Snohomish County

1,486
CHILDREN



took part in child care programs - providing working parents with the dependable support they need, and the consistent routine and adult relationships their child relies on for healthy development. Sixty percent of children enrolled in child care programming receive some level of financial assistance.

SERVICE AREA

7
SCHOOL
DISTRICTS

46
SCHOOLS

20
PROGRAM
LOCATIONS

24,283 YOUTH



learned the importance of teamwork and commitment while gaining self-confidence in ongoing wellness activities including aquatics, youth sports, dance, and other well-being opportunities.



167
MENTORING
MATCHES

Big Brothers Big Sisters provides quality one-to-one, school-based, and community-based mentoring.

ONE in THREE

SNOHOMISH COUNTY
YOUTH & TEENS



gained self-confidence and academic guidance through teen programs, including Teen Late Nights, Girls of Promise, Youth and Government, and Youth Making a Difference.



The My Achievers Program assisted **407** middle and high school students with homework support and academic goal setting through **15** program sites across the county.

HEALTHY LIVING

Improving the nation's health and well-being.



56,458

adults took a step toward better health through YMCA programs and healthy living activities.



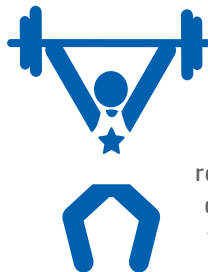
248

families received resources to reduce youth obesity and establish healthier family lifestyles through our ACT! (Actively Changing Together) program.



44

adults worked to prevent diabetes through the YMCA Diabetes Prevention Program.



93
CANCER SURVIVORS

reclaimed their health after cancer treatment through the LIVESTRONG® at the YMCA program.

SOCIAL RESPONSIBILITY

Giving back and providing support to our neighbors.



300

homeless families were provided support and encouragement through the Y-Community Program.



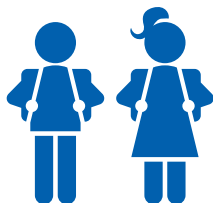
2,168

volunteers offered valuable assistance with policies, programs, and activities donating 37,766 hours of service.



10,446

lives were transformed thanks to \$2,475,416 in direct membership and program financial assistance from the Y.



\$3.91 MILLION

was provided in youth and family program subsidies to nurture the potential of 36,700 children and teens throughout Snohomish County.

EVERETT FAMILY YMCA AND ASSOCIATION OFFICES
2720 ROCKEFELLER AVE., EVERETT 98201
425 258 9211

MARYSVILLE FAMILY YMCA
6420 60TH DRIVE NE, MARYSVILLE 98270
360 653 9622

MILL CREEK FAMILY YMCA
13723 PUGET PARK DRIVE, EVERETT 98208
425 337 0123

MONROE/SKY VALLEY FAMILY YMCA
14033 FRYLANDS BLVD., MONROE 98272
360 805 1879

MUKILTEO FAMILY YMCA
10601 47TH AVE. W., MUKILTEO 98275
425 493 9622

STANWOOD-CAMANO YMCA
7213 267TH ST. NW, STANWOOD 98292
360 629 9622

YMCA-SNOCO.ORG

BIG BROTHERS BIG SISTERS OF SNOHOMISH COUNTY
AN AFFILIATE OF THE YMCA OF SNOHOMISH COUNTY
10520 19TH AVE. SE, STE. B, EVERETT WA 98208
425 252 2227



BBBS-SNOCO.ORG